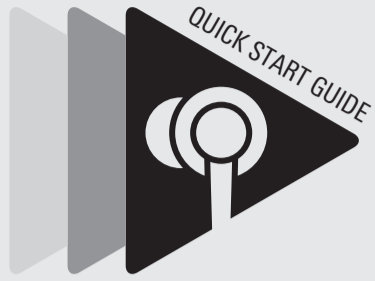




audio-technica



ATH-SPORT70BT

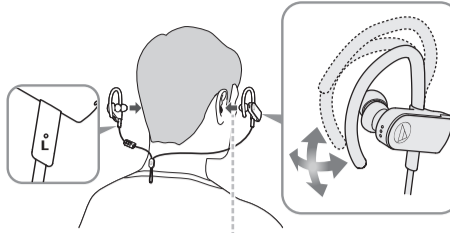
### Check



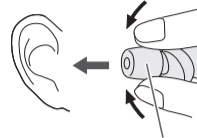
- Headphones
- Eartips (XS, S, M, L)
- COMPLY™ Foam eartips (M)
- USB charging cable
- Case
- Quick start guide (this leaflet)
- Caution guide

### Wear

Freely adjust the ear hangers to fit your ears

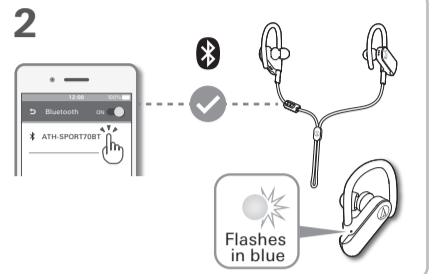
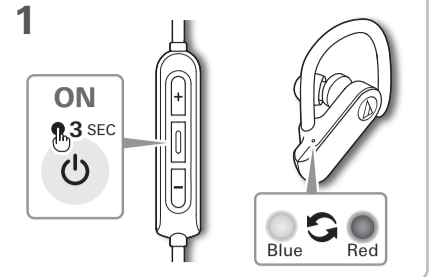


For COMPLY™ Foam eartips

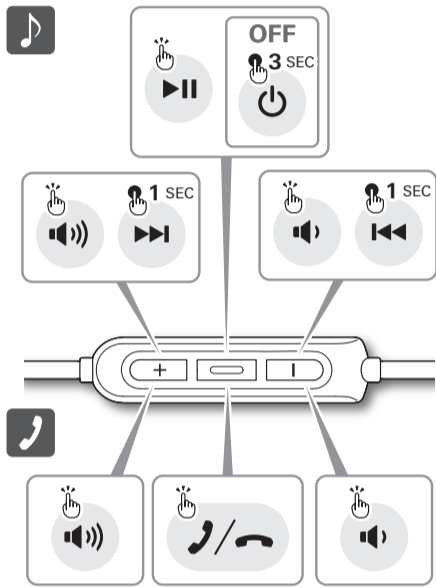


Squeeze, then insert

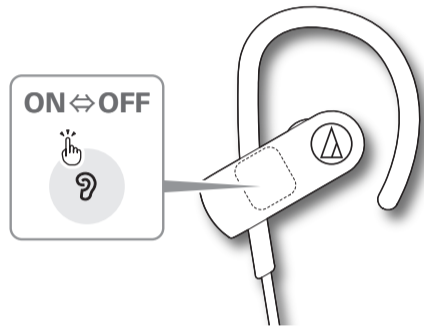
### Pairing



### Music / Phone

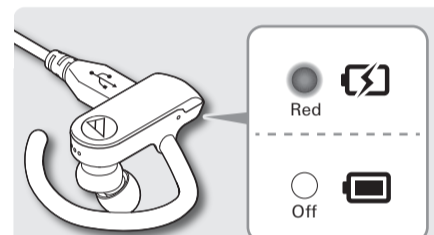
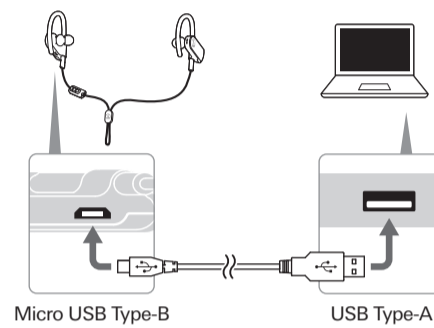


### Hear-through function



With the built-in microphone, you can hear the sounds around you while wearing this product.

### Charge



### Help

For more information on how to use this product, visit the Audio-Technica website at the URL listed below and contained in the QR code.



www.audio-technica.com

The Bluetooth word mark and logos are owned by Bluetooth SIG, Inc. and any use of such marks by Audio-Technica Corporation is under license. All other trademarks are property of their respective owners.

Audio-Technica Corporation  
2-46-1 Nishi-naruse, Machida, Tokyo 194-8666, Japan  
www.audio-technica.co.jp ver1 2017.10.01  
©2018 Audio-Technica Corporation 132313360-01-02 ver2 2018.02.15

Français / Deutsch / Italiano

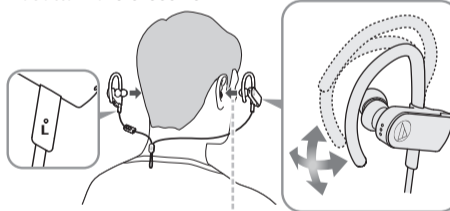
### Contrôler / Prüfen / Controllo



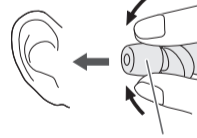
- Écouteur / Kopfhörer / Cuffie
- Embout (XS, S, M, L) / Kopfhöreraufsätze (XS, S, M, L) / Copriauricolari (XS, S, M, L)
- Embouts (M) en mousse COMPLY™ / COMPLY™ Schaumauflagen (M) / Copriauricolari in schiuma COMPLY™ (M)
- Câble de recharge USB / USB-Ladekabel / Cavo per la carica USB
- Boîtier / Etui / Custodia
- Guide de prise en main (ce dépliant) / Kurzanleitung (dieses Blatt) / Guida rapida (questo opuscolo)
- Guide de mise en garde / Sicherheitsanweisungen / Guida precauzionale

### Porter / Tragen / Come indossare

Ajustez librement les contours d'oreille pour les adapter à vos oreilles  
Justieren Sie die Ohrbügel, damit sie gut am Ohr sitzen  
Regolare gli archetti a piacimento in modo da adattarli alle orecchie

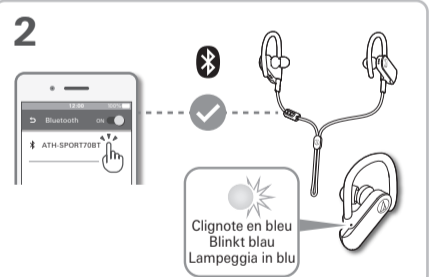
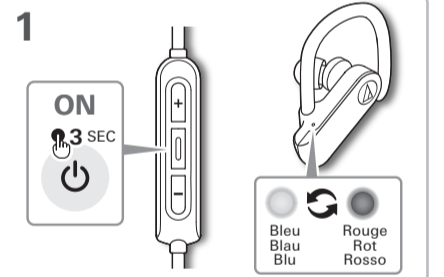


Pour les embouts en mousse COMPLY™  
Bei COMPLY™ Schaumauflagen  
Per i copriauricolari in schiuma COMPLY™

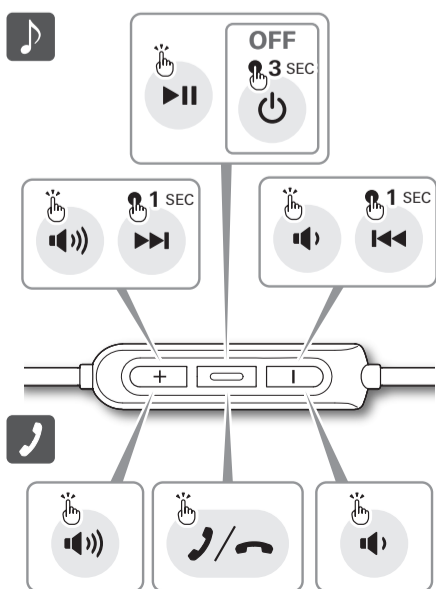


Pressez, puis insérez  
Zusammendrücken, dann einsetzen  
Schiacciare e inserire

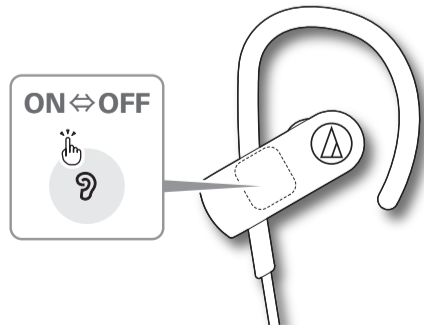
### Appairage / Paarung / Associazione



### Musique/téléphone / Musik/Handy / Musica/Telefono



### Fonction d'écoute / „Hear-Through“-Funktion / Funzione „Hear-through“

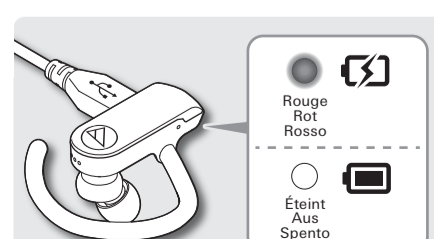
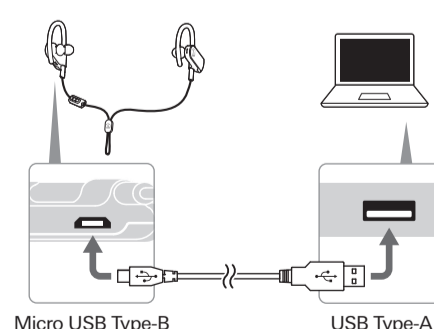


Le microphone étant intégré, vous pouvez entendre les sons environnants lorsque vous portez ce produit.

Durch das integrierte Mikrofon können Sie die Geräusche um Sie herum hören, obwohl Sie dieses Produkt tragen.

Con il microfono integrato, è possibile ascoltare i rumori circostanti anche indossando il prodotto.

### Charge / Laden / Carica



### Aide / Hilfe / Guida

Pour plus d'information sur les modalités d'utilisation de ce produit, rendez-vous sur le site Web Audio-Technica à l'URL indiquée ci-après et contenue dans le code QR.

Für weitere Informationen zur Nutzung dieses Produkts besuchen Sie die Audio-Technica-Website unter der unten angeführten und der im QR-Code enthaltenen URL.

Per maggiori informazioni su come utilizzare questo prodotto, consultare il sito di Audio-Technica all'URL indicato di seguito e incluso nel codice QR.



www.audio-technica.com

La marque verbale et les logos Bluetooth sont détenus par Bluetooth SIG, Inc. et ces marques sont utilisées sous licence par Audio-Technica Corporation. Toutes les autres marques de commerce sont la propriété de leurs détenteurs respectifs.

Die Bluetooth-Wortmarke und -Logos sind Eigentum von Bluetooth SIG, Inc., und die Nutzung dieser Marken durch Audio-Technica Corporation erfolgt unter Lizenz. Alle anderen Markenzeichen sind Eigentum der jeweiligen Inhaber.

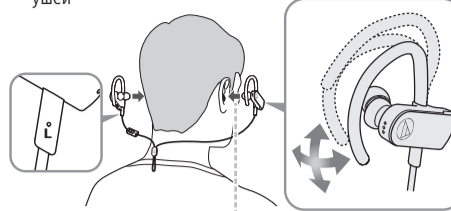
Il marchio e i logo del termine Bluetooth sono di proprietà di Bluetooth SIG, Inc., e qualsiasi utilizzo di tali marchi da parte di Audio-Technica Corporation è soggetto a licenza. Tutti gli altri marchi sono di proprietà dei rispettivi proprietari.

## ✓ Comprobar / Verificação / Проверка

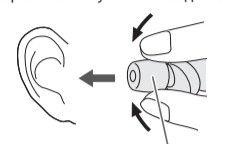
- Auriculares / Fones de ouvido / Наушники
- Puntas de audífono (XS, S, M, L) / Ponteiros (PP, P, M, G) / Насадки (размеры XS, S, M, L)
- Puntas de espuma COMPLY™ (M) / Ponteiros de espuma COMPLY™ (M) / Поролоновые ушные насадки COMPLY™ (размер M)
- Cable de carga USB / Cabo de carga USB / USB-кабель для зарядки
- Estuche / Estojo / Чехол
- Guía de inicio rápido (este folleto) / Guia rápido (este folheto) / Краткое руководство пользователя (этот буклет)
- Guía de precauciones / Guia de precauções de segurança / Руководство по мерам предосторожности

## Colocación / Uso / Надевание

Ajuste libremente los ganchos para adaptarlos a sus orejas  
 Ajuste livremente os suportes de orelha para que se encaixem em suas orelhas  
 Слегкостью регулируйте положение заушин по форме ушей

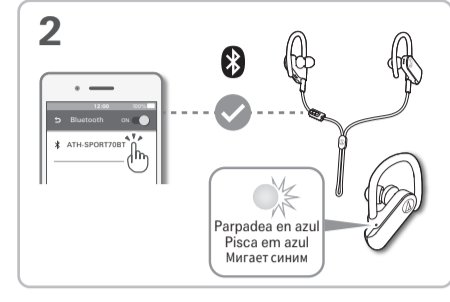
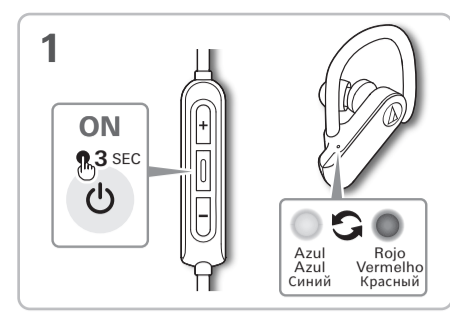


Puntas de espuma COMPLY™  
 Para ponteiros de espuma COMPLY™  
 Для поролоновых ушных насадок COMPLY™

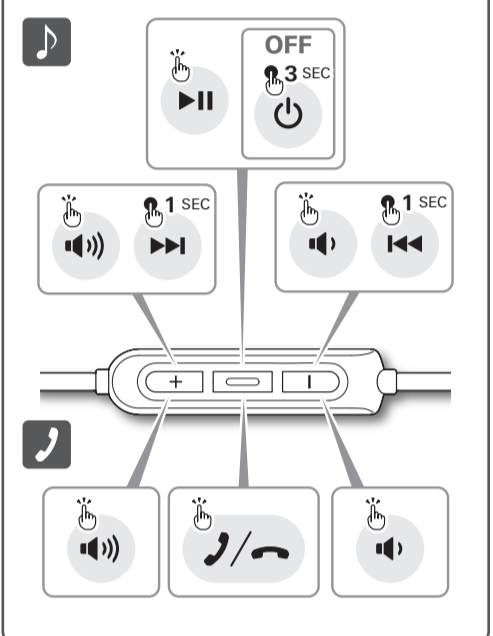


Apretar e introducir  
 Comprima e, em seguida, insira  
 Сожмите, затем вставьте

## Emparejamiento / Emparelhamento / Сопрежение



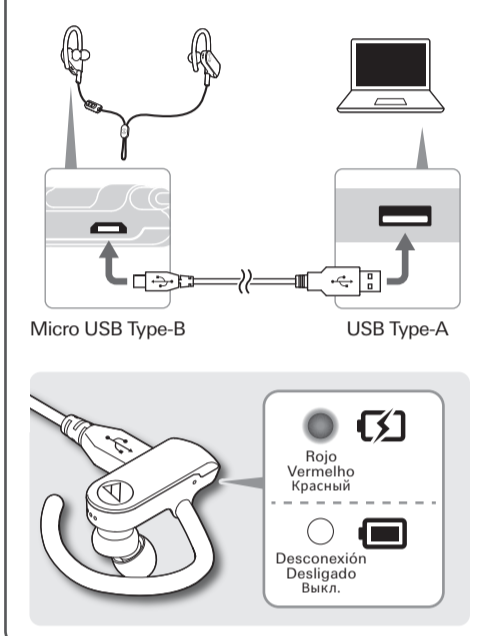
## Música/Teléfono / Música/Telefone / Музыка/Телефон



## Función de escucha directa / Função hear-through / Функция HearThrough (слышимость окружающих звуков)



## Carga / Carregar / Заряд



## Ayuda / Ajuda / Справка

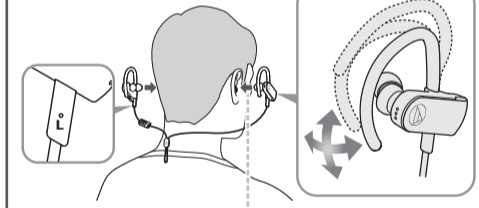
Para obtener más información sobre cómo usar este producto, visite el sitio web de Audio-Technica en la URL mostrada a continuación e incluida en el código QR.  
 Para obter mais informações sobre como usar este produto, visite o site da Audio-Technica no endereço listado abaixo e contido no código QR.  
 Для получения дополнительной информации по использованию этого изделия посетите веб-сайт компании Audio-Technica по адресу, указанному ниже, а также зашифрованному в QR-коде.  
[www.audio-technica.com](http://www.audio-technica.com)

## ✓ 检查 / 檢查 / 점검

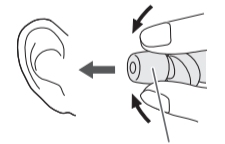
- 耳机 / 耳機 / 헤드폰
- 耳套 (XS、S、M、L) / 耳塞 (XS、S、M、L) / 이어팁(XS, S, M, L)
- COMPLY™泡沫耳套 (M) / COMPLY™泡棉耳塞 (M) / COMPLY™ 폼 이어팁(M)
- USB充电线 / USB充電線 / USB 충전 케이블
- 耳机盒 / 攜存盒 / 케이스
- 快速入门指南 (本说明书) / 快速入門指南 (本手冊) / 빠른 시작 가이드(본 소책자)
- 注意事项指南 / 注意事項 / 주의사항 안내

## 佩戴 / 佩戴 / 마모

自由调节耳挂以贴合耳朵  
 自由調整耳掛以貼合耳朵  
 귀에 맞게 귀걸이를 자유롭게 조정

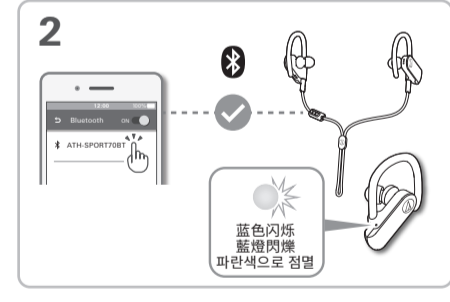
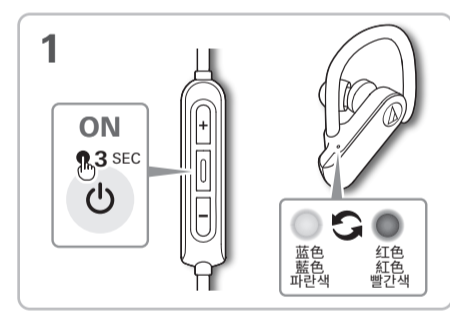


使用 COMPLY™泡沫耳套  
 使用 COMPLY™泡棉耳塞  
 COMPLY™ 폼 이어팁

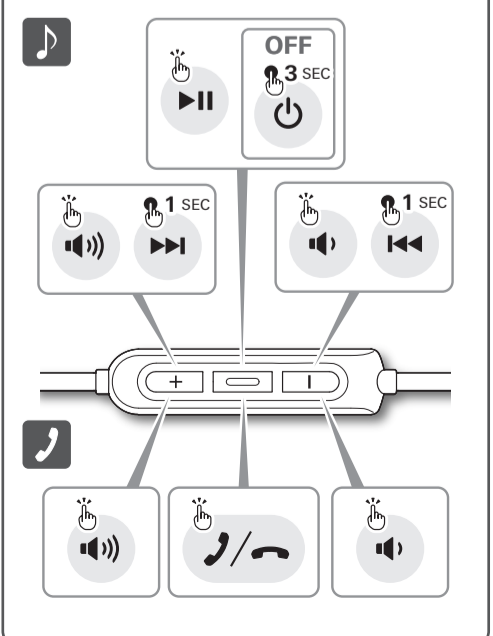


捏扁，然後插入  
 捏扁，然後插入  
 밀어 넣어서 삽입

## 配对 / 配對 / 페어링



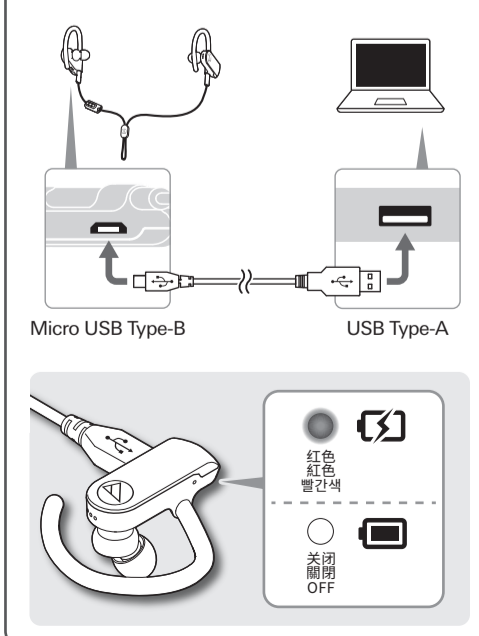
## 音乐/电话 / 音樂/電話 / 음악/전화



## 直通聆听功能 / 外部聲音功能 / 청취 기능



## 充电 / 充電 / 충전



## 帮助 / 說明 / 도움말

更多关于如何使用本产品的信息，请通过下列网址或扫描二维码访问“鐵三角”网站。  
 欲獲得本產品的詳細使用方法，請掃描下方 QR code 或直接透過網址連接至「鐵三角」網站。  
 본 제품의 사용법에 관한 자세한 사항은 아래의 URL과 QR 코드에 있는 Audio-Technica 웹사이트에서 확인할 수 있습니다.  
[www.audio-technica.com](http://www.audio-technica.com)